



# GREENPAGES

## Emotional Literacy



## MESSAGE FROM THE PRINCIPAL

When caregivers help children to recognize and manage how they respond to different experiences, children start to learn the skills they will need to self-regulate. Children who learn to seek comfort and manage their feelings are better able to learn and handle the ups and downs of everyday life.

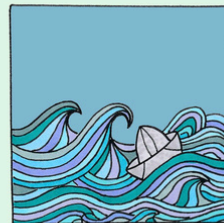
It is no secret that children learn best when regulated, and self-regulation is teachable! And, just like so many aspects of child development, teaching children is a community endeavor. Self-regulation begins with co-regulation, both at home, school, and the child's broader family & community.

At Evergreen, we have direct social-emotional learning time, based on the Open Parachute & the Social Thinking programs.

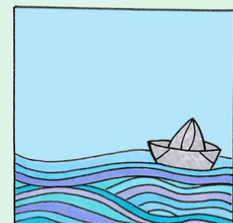
With experienced EAs, teachers and staff who strive to bring calm and understanding, we aim to co-regulate with students, to foster and develop skills within all learners. Our staff use the Zones of Regulation, WITS and other programs that support this vision, and many have completed some level of Trauma Informed Practice professional development.

Outdoor time is well-recognized in supporting child regulation, and with at least 90 minutes per day outside playing and learning in our beautiful surroundings, Evergreen students have ample opportunity. Likewise, with body, movement & brain breaks, soft starts in the mornings, and access to food throughout the day, students are supported throughout the school in developing their regulation skills!

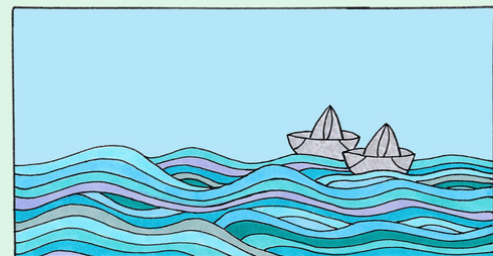
WHEN THEIR STORM



MEETS OUR CALM

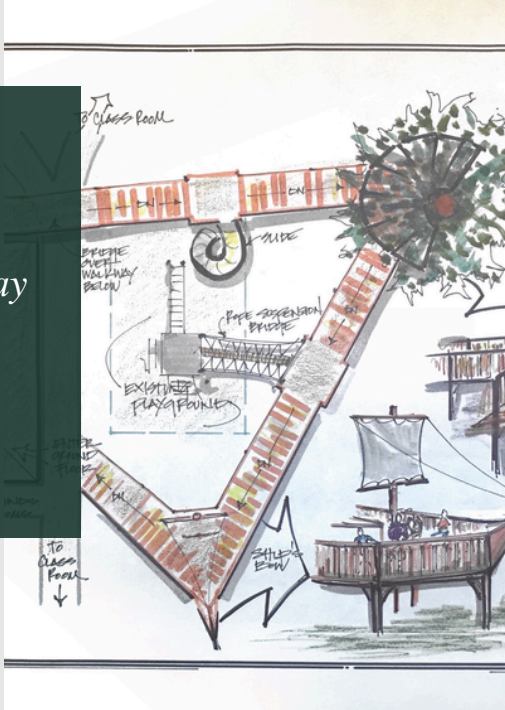


CO - REGULATION OCCURS



@kwiens62

## *Playful Play Spaces*



If time is limited for you, monetary donations for additional features like a slide and climbing wall would be most appreciated. If there is any way you can help or donate, please reach out at [board.treasurer@evergreenbc.net](mailto:board.treasurer@evergreenbc.net) Help us make this dream a reality.

Dave

Director of the Board

## MESSAGE FROM THE BOARD

This July, Evergreen is excited to welcome the Timber Framers Guild for what may be one of the largest volunteer construction projects this decade. As many have heard, plans for the erection of a 100 foot ramp aimed as accessibility for all, will offer the community a space for play, connection, and recreation for years to come. Once again, Evergreen is asking for your support. There will be a large workforce that needs to be fed and housed, so meal sponsorship and/or volunteer housing is a must. In addition, installation assistance will be needed for odd jobs, such as help with pickets, decking, and roofing.



*Build with us!*



## Calendar & Reminders

## CALENDAR & REMINDERS

The school calendar can be found on our website under **Calendar** (click link to go to calendar):

- May - ongoing IEP meetings
- May 16 - Board meeting
- May 20 - SCHOOL CLOSED
- May 22 - Pizza Day
- May 24 - SCHOOL OPEN, beach day
- May 29 - Food literacy day
- May 30 - Sacred Cedar Center
- June 4 - Egg drop
- June 5 - Pizza Day
- June 6 - Theme activity day
- June 6 - Board Strategic Planning
- June 7 - Cobble Hill hike school closed at 12:30
- June 11-13 - Spruce Salt Spring trip
- June 14 - Sports Day, school closed at 12:30
- June 17 - Grad dinner
- June 19 - Pizza Day, report cards available
- June 21 - Celebration day, family & staff pot luck
- June 22 - SCHOOL CLOSED FOR SUMMER

## COMMUNITY CORNER

### Playful Places - Accessibility Ramp Project

Come build with us! Anyone looking to get involved with this summer's major project, please review this [post](#).

**Summer camps** are filling up fast! Here are a selection of offerings:

[Westview Learning](#)

[Cowichan Estuary](#)

[CVRD Rec Guide](#)

[Cowichan Bay Kayaking](#)



Summer  
Camps

## IEP MEETINGS

A graphic with a light orange background featuring leaf illustrations. A dark green square on the left contains the text 'IEPs'. A central orange circle contains a bell icon and the text 'IEP Meetings In May'.

Families whose children have an IEP will need to book a meeting to review the IEP and set new goals. Each meeting is 50 minutes during which time we will review the goals and objectives, and potentially set new or updated learning goals and targets.


At evergreen, we strive to meet with each family that have children with IEPs at least twice per year. This deeply connects parents, teachers, EAs, SLPs, OTs and other team members to the child's learning journey.

## UPDATES & REMINDERS

Please remember to check in with Leslie if your child is late, needs to be picked up early, or is returning from an appointment, so we can record accurate attendance and ensure student safety.

Please check lost & found, downstairs in the library, there is quite the collection, especially of winter clothing.

Through the province's Feeding Futures School Food Program Funding, we will be continuing our program of having snacks available to all students in Leslie's office.

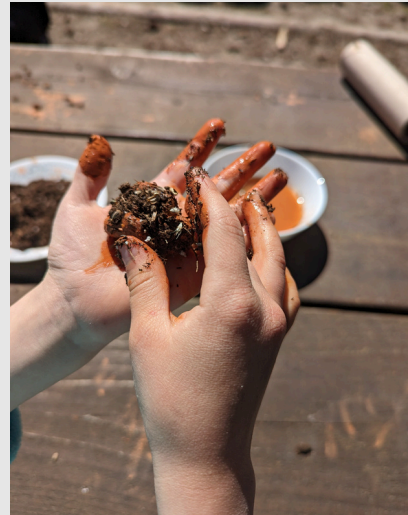
A dark green square containing the text 'Feeding Futures' in a white serif font.A graphic featuring a young girl eating a carrot stick. A purple banner at the top reads 'Supporting school food programs, so kids can focus on learning'. A blue banner at the bottom left reads 'StrongerBC for everyone'.

StrongerBC  
for everyone



 **MAY FUN FAIR**



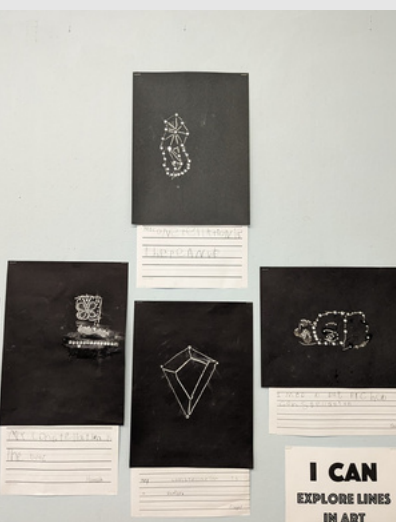
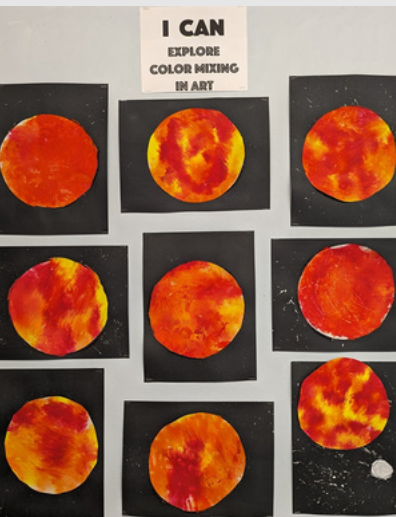


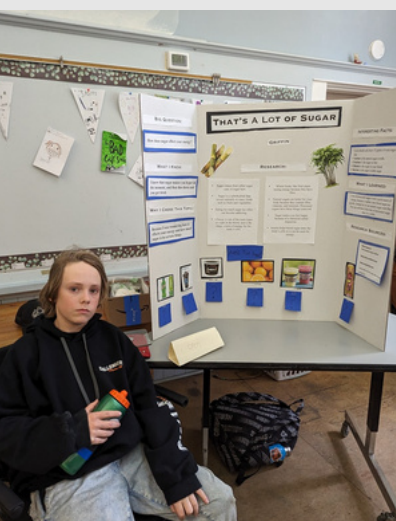
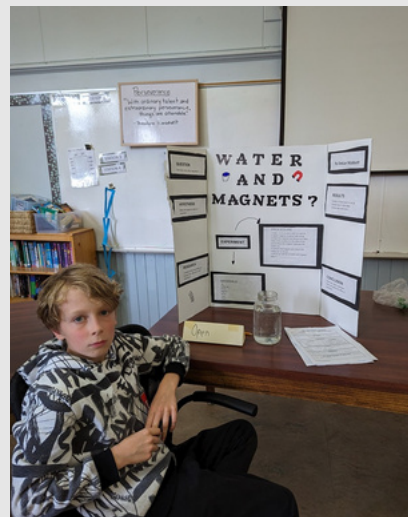
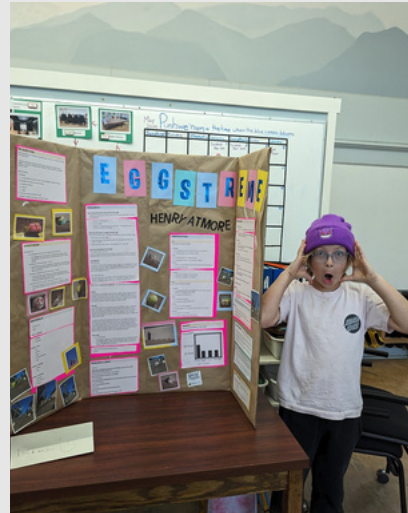
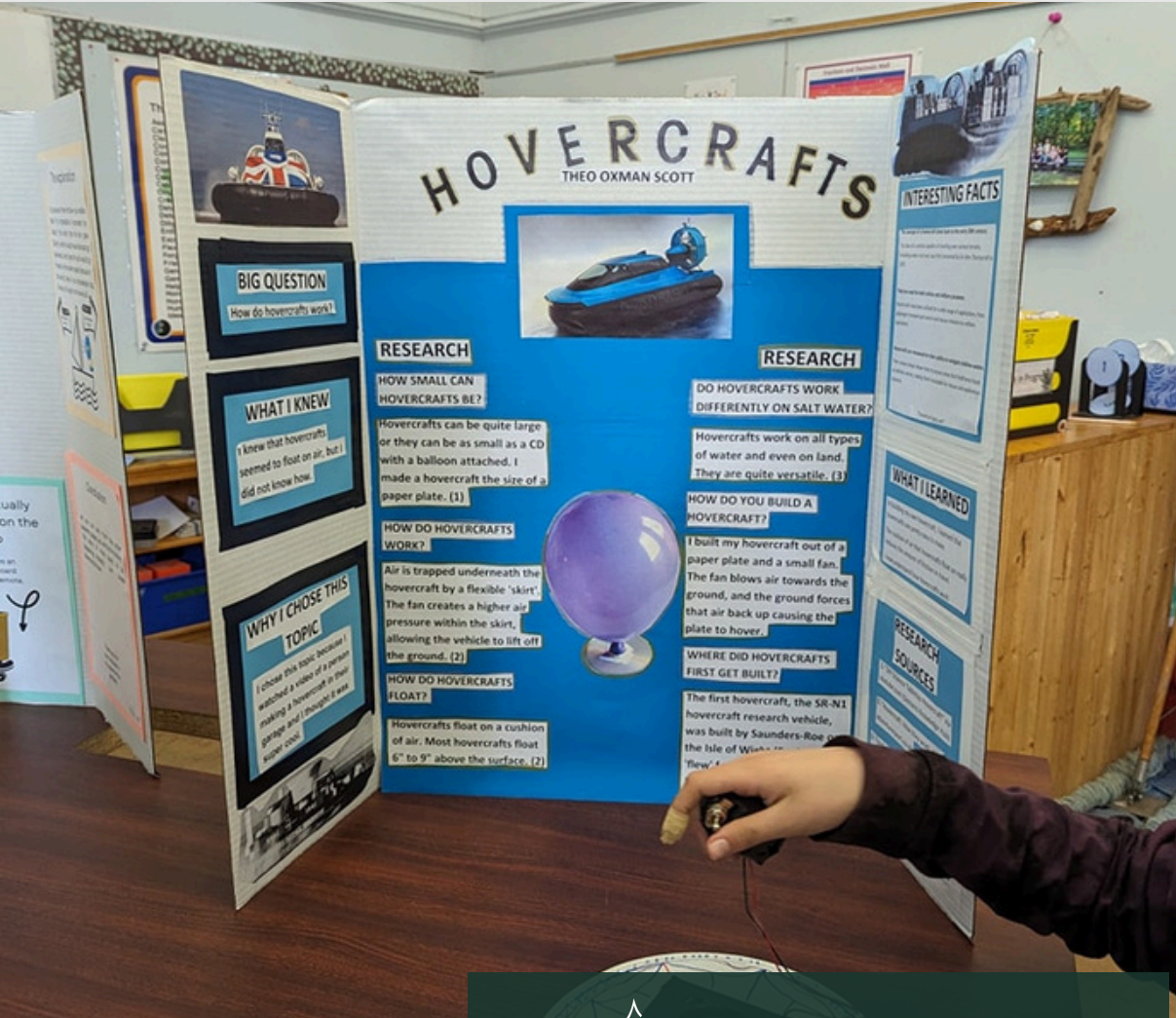
## EARTH WEEK





## OUTER SPACE THEME





SCIENCE FAIR